

Genie® S®-80 J & S-80 J TraX™

Specifications

Models	S-80 J & S-80 J TraX	
Measurements	US	Metric
Working height max. ⁽¹⁾	86 ft 5 in	26.51 m
Platform height max.	80 ft 5 in	24.51 m
Horizontal reach max.	54 ft 9 in	16.69 m
A Platform length (8 ft/6 ft)	3 ft/2 ft 6 in	0.91 m/0.76 m
B Platform width (8 ft/6 ft)	8 ft/6 ft	2.44 m/1.83 m
C Height - stowed (tires)	9 ft	2.74 m
C Height - stowed (TraX)	9 ft	2.74 m
D Length - stowed (tires)	34 ft 3 in	10.44 m
D Length - stowed (TraX)	34 ft 3 in	10.44 m
D Length - storage/transport (jib tucked under)	26 ft 2 in	7.98 m
E Width (tires)	8 ft 2 in	2.49 m
E Width (TraX)	8 ft 4 in	2.54 m
F Wheelbase	10 ft	3.04 m
G Ground clearance - center (tires)	14 in	0.36 m
G Ground clearance - center (TraX)	16.25 in	0.41 m
H Height under counterweight	3 ft 7 in	1.09 m

Productivity

Lift capacity max. - unrestricted	660 lb	300 kg
Platform rotation	160°	
Jib length	6 ft	1.83 m
Vertical jib rotation (up/down)	130°	
Turntable rotation	353°	
Turntable tailswing	8 ft 4 in	2.54 m
Drive speed - stowed (tires)	3.0 mph	4.8 km/h
Drive speed - stowed (TraX)	2.20 mph	3.54 km/h
Drive speed - raised (tires)	0.68 mph	1.1 km/h
Drive speed - raised (TraX)	0.50 mph	0.8 km/h
Gradeability - stowed ⁽²⁾	45%	
Tilt sensor activation (front to back/side to side)	5°/5°	
Turning radius - inside/outside (tires)	8 ft 1 in/18 ft 2 in	2.46 m/5.54 m
Tires	355/55D625	
Track system - 4 points	TraX	

Power

Power	Diesel	
Hydraulic tank capacity	23 gal	87 L
Fuel tank capacity	30 gal	114 L

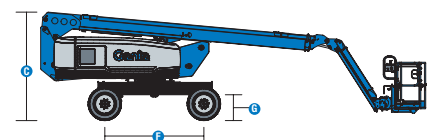
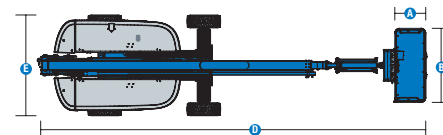
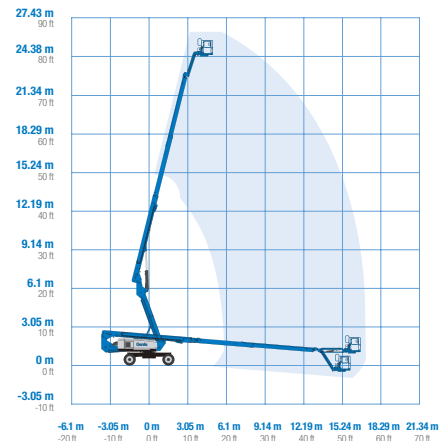
Weight⁽³⁾ and Floor Loading⁽⁴⁾

Weight	24,500 lb	11,113 kg
Weight (tires)	24,500 lb	11,113 kg
Weight (TraX)	28,700 lb	13,018 kg
Tire contact pressure	96 psi	664 kPa
Track contact pressure	16 psi	108 kPa
Occupied floor pressure (tires)	230 psf	11.02 kPa
Occupied floor pressure (TraX)	257 psf	12.32 kPa

Sound and Vibration Levels

Sound Pressure level (ground workstation)	83 dBA
Sound Pressure level (platform workstation)	79 dBA
Vibrations	< 2.5 m/s ²

Range of motion S-80 J/S-80 J TraX



(1) The metric equivalent of working height adds 2 m to platform height. The imperial equivalent adds 6 ft to platform height.

(2) Gradeability applies to driving on slopes and may vary depending on options and machine configurations. See operator's manual for details regarding slope ratings.

(3) Weight refers to standard configuration and may vary depending on options and/or country standards.

(4) Floor loading information is approximate and may vary depending on options and machine configurations. It should be used only with adequate safety factors.

Genie® S®-80 J & S-80 J TraX™

SKU: Standard Model

- S-80 J, 4WD

* Build to Order

Option availability		S	S+	BtO
Power	49 hp Deutz D436, diesel, China Stage III			<input type="radio"/>
	Anti-restart engine protection			
	Auto engine fault shutdown			
	Cold weather package			<input type="radio"/>
	Diesel air intake pre-cleaner			<input type="radio"/>
	In cylinder glow plug (diesel only)			
	Positive air shutdown system			<input type="radio"/>
Platform	6ft/1.83m Aircraft protection platform with side swing gate			<input type="radio"/>
	6ft/1.83m Aircraft protection platform with sliding mid-rail			<input type="radio"/>
	6ft/1.83m dual-entry platform with side swing gate			<input type="radio"/>
	8ft/2.44m tri-entry platform with side swing gate			
	Air line to platform			<input type="radio"/>
	Control box covers			<input type="radio"/>
	Drive enable system			
	Dual axis joystick steering			
	Horn			
	Lift Guard Contact Alarm			
	Lift Guard Full Mesh panels			<input type="radio"/>
	Lift Guard Half Mesh panels			<input type="radio"/>
	Lift Power 12kW Welder Ready			<input type="radio"/>
	Lift Power 3kW AC Generator, 110V/60Hz			<input type="radio"/>
	Lift Power 3kW AC Generator, 220V/50Hz			<input type="radio"/>
	Lift Tools Work Tray			
	Light Package: drive and work lights			<input type="radio"/>
	Platform auxiliary top rail			<input type="radio"/>
	Platform load sense system			
	Proportional controls			
	Self-leveling platform			
	Thumb rocker steering			<input type="radio"/>
Chassis	Active oscillating axle			
	Alarm package: includes flashing beacon and travel alarm			
	Biodegradable hydraulic oil			<input type="radio"/>
	Cold weather hydraulic oil			<input type="radio"/>
	Deluxe hostile environment kit			<input type="radio"/>
	Descent, tilt and motion alarm			
	Dual battery system			
	Fire resistant hydraulic oil			<input type="radio"/>
	Hostile environment kit			<input type="radio"/>
	Hydraulic oil cooler			
	Lift Connect Telematics			<input type="radio"/>
	Lift Connect with Access Manager upgrade			<input type="radio"/>
	Positive traction drive			
	Rough terrain, foam-filled tires			<input type="radio"/>
	Rough terrain, foam-filled, non-marking tires			<input type="radio"/>
	Tech Pro Link connector			
	TraX quadra track drive system			<input type="radio"/>
	Wheel motors 2 speed			

- ☒ S Standard
- ☒ S+ Standard +
- ☒ BtO Build to Order
- ☒ ✓ Standard Features
- ☐ Options



660lb/300kg Capacity
Jib



Low Transport Weight



Simple Design & Maintenance



Genie Genuine Accessories⁽¹⁾

- Lift Tools Productivity Tools
- Tech Pro Link Handheld Device

(1) More accessories available from Genie Genuine Parts.

Product specifications are subject to change without notice or obligation. Photographs and/or drawings herein are for illustrative purposes only. Refer to the appropriate Operator's Manual for instructions on proper equipment use. Failure to follow instructions in the Operator's Manual may result in serious injury or death. The only warranty applicable to our equipment is the standard written warranty applicable to the particular product and sale and we make no other warranty, express or implied. Products and services listed may be trademarks, service marks or trade names of Terex Corporation and/or their subsidiaries in the USA and many other countries. Terex, Genie, Quality By Design, Xtra Capacity, Lift Power, Lift Guard, Lift Tools, Lift Connect and Tech Pro Link are registered trademarks of Terex Corporation or its subsidiaries.

05/22